

NEWSLETTER



THIS ISSUE

- ▶ **Small Business Spotlights**
Learn more about three small businesses providing construction management services for some of the largest infrastructure projects today.
- ▶ **Upcoming Events**
Learn more about the events our committee is planning just for M/W/DBE/SBE firms.
- ▶ **Past Events**
Learn more about the events our committee participated in last Quarter
- ▶ **Agency Resources**
Find certification and RFP information for some of Southern California's largest agencies.
- ▶ **C.O.D.E.**
Learn more about C.O.D.E. and the team behind these newsletters and events

CREATING OPPORTUNITIES FOR DIVERSITY & EQUITY

CMAA Southern California (CMAASC) represents the diverse community that is Los Angeles, San Bernardino, Ventura, and Riverside Counties. We are committed to promoting diversity, equity, and inclusion with equal opportunity for all persons in its membership, leadership, and activities.

As stated in its name, the C.O.D.E. Committee was created to create opportunities for diversity and equality, supporting the growth of minority owned, women owned, disadvantaged business enterprise, and small business enterprises (M/W/DBE/SBE) by encouraging their contributions to the success of owner programs and projects.

The C.O.D.E. Committee's quarterly newsletter contains useful information to support these businesses.

Small Business Spotlight

SBE



Project Highlight

RCTC: SR-60 Truck Climbing Lanes, Beaumont and Moreno Valley, CA

FALCON provided CM/CI services for this project that won CTF Transportation Award Goods Movement Project of the Year and the CMAA Transportation: Roads and Highways in the range of > \$100M, Innovation and Implementation of Technology. The project added an EB truck-climbing lane and a WB truck-descending lane for 4.5 miles between Gilman Springs Road and 1.4 miles west of Jack Rabbit Trail. A total of 155,000 cubic yards of new JPCP concrete pavement was placed. In addition to adding truck lanes, the project widened the inner and outer shoulders and excavated 2.1 million cubic yards of dirt from the steep hillsides to add another 30 feet next to the outer shoulders. The wider shoulders and open space provide safe pullout areas for motorists and emergency responders. The project also flattened the curving roadway to improve sight distance for drivers, a safety benefit. construction of two 20-foot by 20-foot by 200-foot wildlife crossings and extension of culverts provide animals have a safer way to cross Route 60. Extensive improvements were made to 123 drainage systems and over 15,000 feet of new pipe was laid.

Founding Story

FALCON was founded with the goal of assisting clients to manage the critical issues of time and cost on their projects from conception through close out. FALCON works to establish strong relationships with contractors, among their staff, and especially with their clients. The result is a record of outstanding client satisfaction. In the complex business of building, it's FALCON's job to offer all clients the best solutions they can.

Fun Fact




Due to its family-oriented nature, many of the younger employees affectionately refer to the president and senior vice president as "Auntie" and "Uncle." This endearing traditions reflects the close-knit and supportive atmosphere fostered within the organization, creating a sense of familiarity and kinship among colleagues.



Est. 2007

Headquarters: Temecula, CA

FALCON Engineering Services, Inc. is an Inland Empire woman owned small business that serves the **transportation** sector. Their services include:

-  Project & Construction Management
-  Construction Inspection
-  UAV Inspection



With over 27 years of industry experience, Maha Faqih, PE, is a registered Professional Electrical Engineer. Prior to establishing FALCON, she dedicated 13 years to serving as a Transportation Electrical Engineer, representing Caltrans District 8.

Client Experience



<http://falcon-ca.com/>

Small Business Spotlight

WBE / LGBTBE / DBE / SBE

Watearth™

Est. 2008

Local Office: Los Angeles, CA

Watearth, Inc. is a consulting engineering and planning firm, which has a national presence with a local footprint. Their services include:

- 💧 Water Resources, Hydrology, & Hydraulics
- 🌍 Design & Green Infrastructure
- 🌿 Environmental & SWPPP



Project Highlight

LA County Public Works Adventure Park Urban Runoff and Stormwater Capture

Watearth spearheaded a groundbreaking Caltrans-funded project focused on stormwater management and water resources. Through diversions from the San Gabriel River Watershed into an underground stormwater capture facility, the project achieved significant milestones such as treating discharges, reusing water for non-potable irrigation, and conducting comprehensive environmental assessments. Watearth's multidisciplinary approach encompassed planning engineering, civil design, environmental documentation, stakeholder engagement, and construction management. Our efforts also included geotechnical studies, hydrological and hydraulic modeling, and obtaining necessary permits. By employing our signature project delivery process and fostering collaboration, Watearth successfully kept the project on track during COVID disruptions, and ensured compliance with grant requirements, ultimately delivering a sustainable and impactful solution for the community.

Founding Story

Jennifer J. Walker founded Watearth in 2008, born of a desire to see cutting-edge stormwater management and green resilient practices take center stage in the design disciplines, knowing the coming century would yield new climate-related challenges. Walker's interest in green solutions dates back to their childhood, when they designed and constructed their first swale, and so the decision to pursue sustainable design was firmly rooted in that original interest, which was fostered by family and through a formal education in both civil engineering and environmental science. Since 2008, Watearth's primary aim has been to serve communities and the environment justly, with planning, modeling, and design that engages closely with the necessary challenge of preserving the natural world.



Watearth has provided a substantial blend of modeling, planning, and design consulting services with an equal focus on providing continuing education learning opportunities for professionals through ASCE and other courses. Watearth and Walker are widely regarded in this

circle as one of the preeminent educators, although the firm has since pivoted since 2015 to focus more wholly on serving public, private, and utility clients

Watearth's projects in recent years have included LEED coordination, environmental permitting and regulatory consulting, process evaluation, design of complex flood control and water quality infrastructure, expert witness investigations and depositions, and more.

<https://watearth.com/>

Client Experience

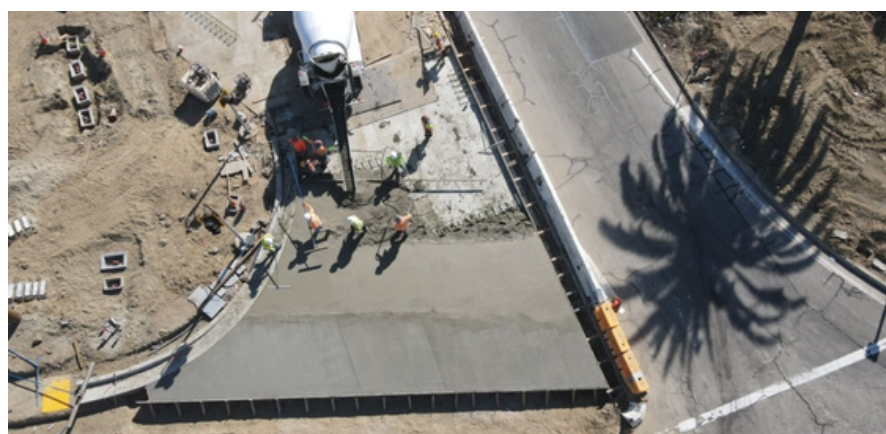


Fun Fact

Watearth actively promotes environmental education and community engagement through our projects. We believe in going beyond technical expertise by incorporating interpretive signage, multi-lingual materials, and educational components to enhance public awareness and involvement. At Watearth, we are dedicated to making a positive impact not only through our innovative solutions but also by fostering sustainability and empowering communities.

Small Business Spotlight

SBE, W/MBE, DBE, UDBE



Project Highlight

SBCTA SR-60 / Central Avenue Interchange Improvement Project

As the prime consultant working in partnership with the San Bernardino County Transportation Authority (SBCTA) and the City of Chino, this project involves widening the Central Avenue Bridge to accommodate two left-turn lanes for both eastbound and westbound on-ramps, as well as the construction of a soil nail wall along the on-ramps. Additionally, DESI is responsible for quality assurance inspection on the traffic signal and ramp metering systems modification, the decorative bridge lighting system, and installing of the new irrigation systems and landscaping. The total construction cost of this project is \$24 million, with an anticipated completion date of September 2023.

Founding Story

Dynamic Engineering Services, Inc. (DESI) is a professional Construction Management firm based in Corona, California. Established in 2008, DESI specializes in providing Construction Management, Contract Administration, and Quality Assurance Inspection Services for transportation improvement projects. With a focus on delivering high-quality services on time and within budget, DESI has built strong working relationships with clients in the Inland Empire, Orange County, and Los Angeles County. The founders, Chia-Chi Wang and Victor Moore, recognized the need for specialized Electrical related quality assurance inspection services for transportation projects, which led them to establish Dynamic Engineering Services, Inc. Their extensive experience in managing public work construction projects and hands-on expertise in Traffic Signal, Lighting, Ramp Metering, and Communication Systems have contributed to the company's success.

Growth

Over the past fifteen years, DESI has experienced significant growth, expanding its team from the original two founders to ten full-time employees. The company has expanded its service area from the Inland Empire to Orange County and Los Angeles County. While Electrical Inspection Services remain their primary focus, DESI has also broadened its scope to other specialized services such as Labor Compliance Monitoring and SWPPP inspection.

Client Experience



Est. 2008

Headquarters: Corona, CA

Dynamic Engineering Services, Inc. (DESI) is a construction management firm specializing in all aspects of transportation projects.

Their services include:

-  Project & Construction Management
-  Traffic Systems & Communications QA
-  Labor Compliance & Contract Admin



Chia-Chi Wang
Co-Founder



Victor Moore
Co-Founder

DESI is also currently providing electrical inspection services for over 15 other project in the Inland Empire and Orange County, including: I-5 Roadway Widening Project (Phase I), I-210 Roadway Widening and Baseline Road Interchange Improvement Project, and I-215 Placentia Interchange Improvement Project.

www.Dynamicsesi.com

C.O.D.E. EVENTS

COMING UP



Meet the Owners & Primes

Exhibition Hall

With nearly 20 Owners & Primes hosting an Exhibit Booth, network and learn more about opportunities. Grab a bite, grab a drink, and grab a few new connections as we're expecting over 150 attendees!

One-on-One Sessions

With nearly 20 Owners & Primes hosting a One-on-One Session, M/W/DBE/SBE's will have the unique opportunity to participate in 6-minute speed networking sessions via One-on-One appointments.

September 13, 2023
4:30PM - 8:00PM
LB Marriott

Small Business Roundtable

CMAASC C.O.D.E. Committee, in partnership with the CMAASC Education Committee, invites you to join us for a round table discussion with local small businesses as we discuss best business practices, including: their systems, procedures, software, and corporate culture.



Nov 2023
Date & Time TBD
Webinar

Have an Idea for an Event?

Feel free to share any ideas you have for an event that further promote M/W/DBE/SBE firms in the construction management fields in Southern California with scmaa@cmaasc.org!

PAST EVENTS

CODE



CMAA SoCal's C.O.D.E. Committee hosted an Exhibit Booth at **AGC's SBCx** on August 25 in Long Beach, CA. Our committee is always looking for ways to reach you to connect you to as many industry resources as possible!

On March 25, C.O.D.E. hosted a booth at **ACLA's Design by Diversity Day**, where we connected with future colleagues!



LA OWNERS PRESENT: SMALL BUSINESS GOALS

In the first of its kind, representatives from **Cedars-Sinai, LACCD, LACMTA, LAWA, & MWD** participated in CODE's May 18 panel where they made their case to be the small business *Owner of Choice*.



Our panelists presented their small business & disadvantaged business goals, internship strategies, mentorship requirements, and future opportunities.

[**CHECK OUT THE ALBUM ON OUR WEBSITE**](#)



➤➤➤ CERTIFICATION & RFP INFO

AGENCY RESOURCES

If you are looking to apply for a DBE or SBE certification, the links below provide certification, solicitation, and application information.

Please note that while we do our best to keep this information up to date, these links are subject to change.



Caltrans[®]

CALTRANS / STATE OF CA

➤➤ [Apply for DBE](#)
➤➤ [Apply for SBE](#)

[Click here for more information.](#)

[Click here for solicitation information.](#)

[Click here for more information.](#)

[Click here for solicitation information.](#)

➤➤ [Apply for DBE/SBE](#)

**LOS ANGELES COUNTY
METROPOLITAN
TRANSPORTATION AUTHORITY**



CITY OF LOS ANGELES

➤➤ [Apply for SBE](#)

[Click here for more information.](#)

[Click here for solicitation information.](#)



➤➤ [Apply for DBE/SBE](#)

[Click here for more information.](#)

[Click here for solicitation information.](#)

LOS ANGELES COMMUNITY COLLEGE DISTRICT

[Apply for DBE/SBE](#) <<<

[Click here for more information.](#)

[Click here for solicitation information.](#)

LOS ANGELES UNIFIED SCHOOL DISTRICT



»» CERTIFICATION & RFP INFO

AGENCY RESOURCES

If you are looking to apply for a DBE or SBE certification, the links below provide certification, solicitation, and application information.

Please note that while we do our best to keep this information up to date, these links are subject to change.



**THE PORT
OF LOS ANGELES
PORT OF LOS ANGELES**

»» [Apply for SBE](#)

[Click here for solicitation information.](#)

[Click here for more information.](#)

[Click here for solicitation information.](#)

»» [Apply for SBE](#)

»» [Apply for DBE](#)

PORT OF LONG BEACH



Port of
LONG BEACH



**LOS ANGELES WORLD
AIRPORTS**

[Click here for SBE information.](#)

[Click here for DBE information.](#)

[Click here for solicitation information.](#)

METROPOLITAN WATER DISTRICT - SOCAL

[Click here for more information.](#)

[Click here for solicitation information.](#)



C.O.D.E. WHAT DO WE DO?



Our Objectives

- 1) Increase firm recruitment and retention
- 2) Advocate for leadership positions within the chapter
- 3) Create a beneficial mentoring network inclusive of Certified Construction Manager (CCM) training
- 4) Host and sponsor events promoting diversity and equity
- 5) Recognize diverse leaders in the industry

Our Team

Janeen Obeid, PE
Arcadis, Inc.

Catrina Snell-Rehder
Arcadis, Inc.

Gustavo Ripalda, AIA, CCM
Kitchell Corporation

Maggie King
Hill International

Corey Harris
AI Management
& Inspection

Damian Becerra, CMIT II
One Atlas

Eric Torres
O2EPCM, Inc.

Roan McRae
CMTS LLC

Arya Rais-Firouz
Atkins

Cathleen Ma, PE
T.Y. Lin International

Isabella Salgado
City of LA Bureau of Engineering

Yolanda Baber
JGM, Inc.

Get Involved

As an organization, we are committed to providing our members with resources and educational opportunities. If you have ideas for future events or would like to learn more about a particular topic, reach out to us at sccmaa@cmaasc.org.

Looking to advertise your firm? We're looking for future newsletter sponsors! Each edition of the newsletter will feature up to four sponsorships. Two of these sponsorships will be allocated for free to M/W/D/SBE firms on a first-come first-serve basis. The other two slots are open to any business. This is a great opportunity to promote new hires and services, project wins, community involvement, and outreach events. Our next newsletter is scheduled for Oct '23. For additional information regarding sponsorship, please contact sccmaa@cmaasc.org

This Newsletter contains information and content supplied by third parties. Information contained herein regarding any specific person, or service by trade name, trade mark, or agency, does not constitute or imply its endorsement, recommendation, or favoring by CMAA SC, its board members, or the members of the C.O.D.E. Committee.