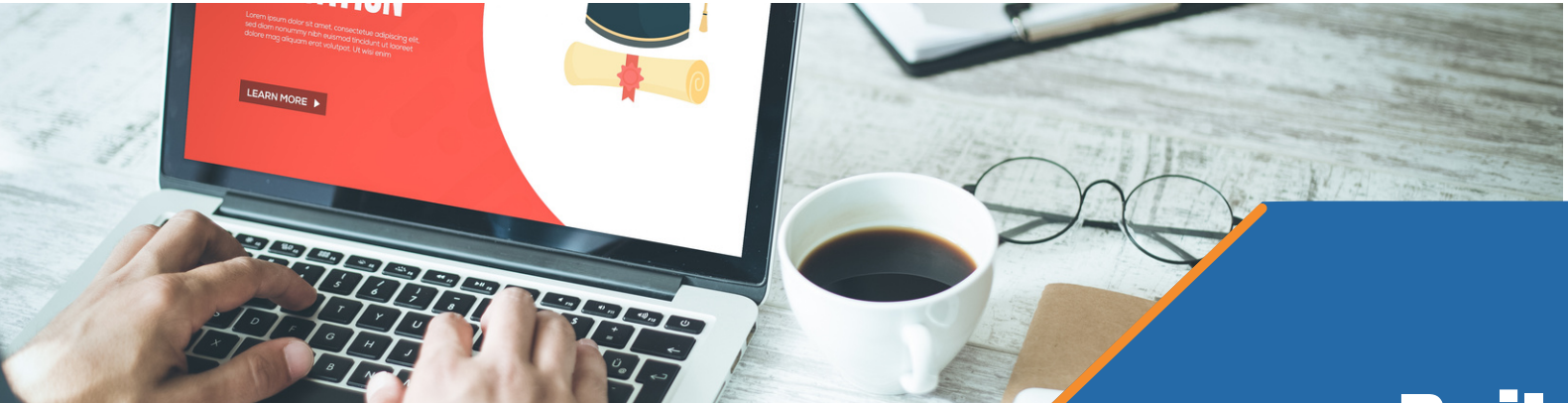




CMAA
SOUTHERN CALIFORNIA CHAPTER

EDUCATION

VIRTUAL EVENT



**THURSDAY
MARCH 30, 2023
8:30 AM - 10:00 AM**

**\$55 - CMAA MEMBERS
\$85 - NON-MEMBERS**

SPONSORSHIPS AVAILABLE

Rail Construction 101

EMCEE:

Jason Rechlecki
Sr. Construction Manager
Anser Advisory

MODERATOR:

Garrett A. Montoya
Rail Division Manager
Anser Advisory

SPEAKERS:

Kosta Mallakis
Construction Manager
Port of Los Angeles

Francisco Aragon
Deputy Chief Harbor Engineer
Port of Long Beach

Kim Chan
Deputy Executive Officer
Los Angeles Metro

PROGRAM SUMMARY

Whether it is for goods movement or people movement, rail is a vital piece of American infrastructure and has been since the 1800's. Today, as the country seeks to gain efficiencies throughout our supply chain and improve upon public transportation, billions of dollars are being invested in new rail construction projects. For attendees seeking to transition into this market and/or for our future construction managers of tomorrow seeking an area of focus, this seminar will delve into the more rudimentary aspects of Rail Construction. With speakers from the Port of Los Angeles, Port of Long Beach, and Los Angeles Metro lending their knowledge and expertise, attendees are sure to get started on the right track.

SPONSOR LEVELS

Platinum - \$750 - Includes 4 Tickets
Gold - \$500 - Includes 3 Tickets
Silver - \$250 - Includes 2 Tickets

CONTINUING EDUCATION CREDITS AVAILABLE

REGISTER HERE